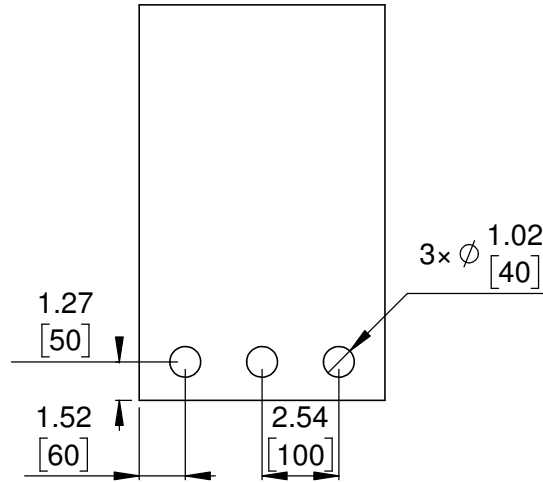
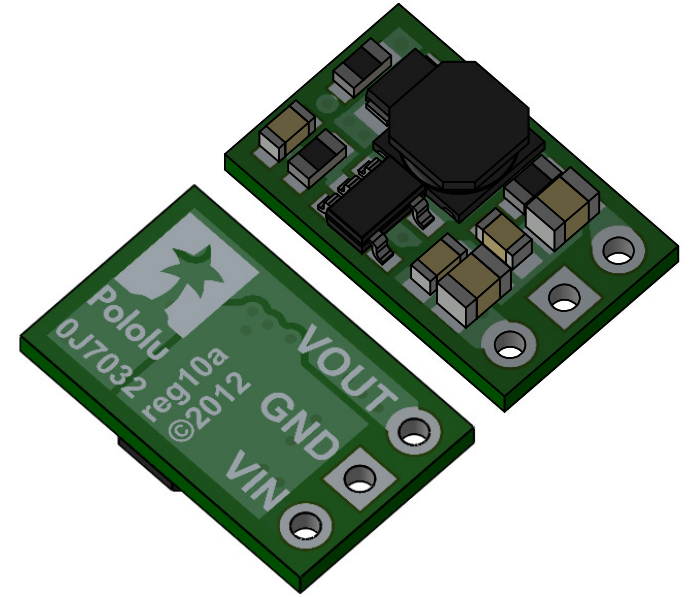


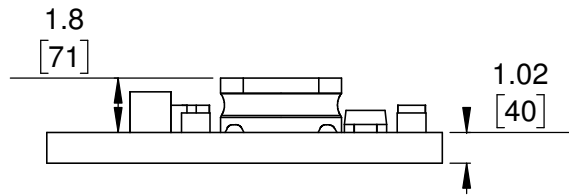
① Board dimensions (top view) Scale 4:1



② Connector callouts (bottom view) Scale 4:1



③ Isometric view Scale 4:1




④ Profile Scale 4:1



⑤ Actual size Scale 1:1

1. To get the specified scale, select 100% in print settings.
2. Drill location tolerance:  $\pm 0.1$  [ $\pm 5$ ].
3. Board edge tolerance:  $\pm 0.3$  [ $\pm 10$ ].

<https://www.pololu.com/product/2115>

Name: Step-Up Voltage Regulator U3V12Fx		Item number: 2115, 2116, 2117
Drawing date: 28 August 2018	Dev code: reg10a	 © 2018 Pololu Corporation
Units: mm [mil]	Material: mixed	